

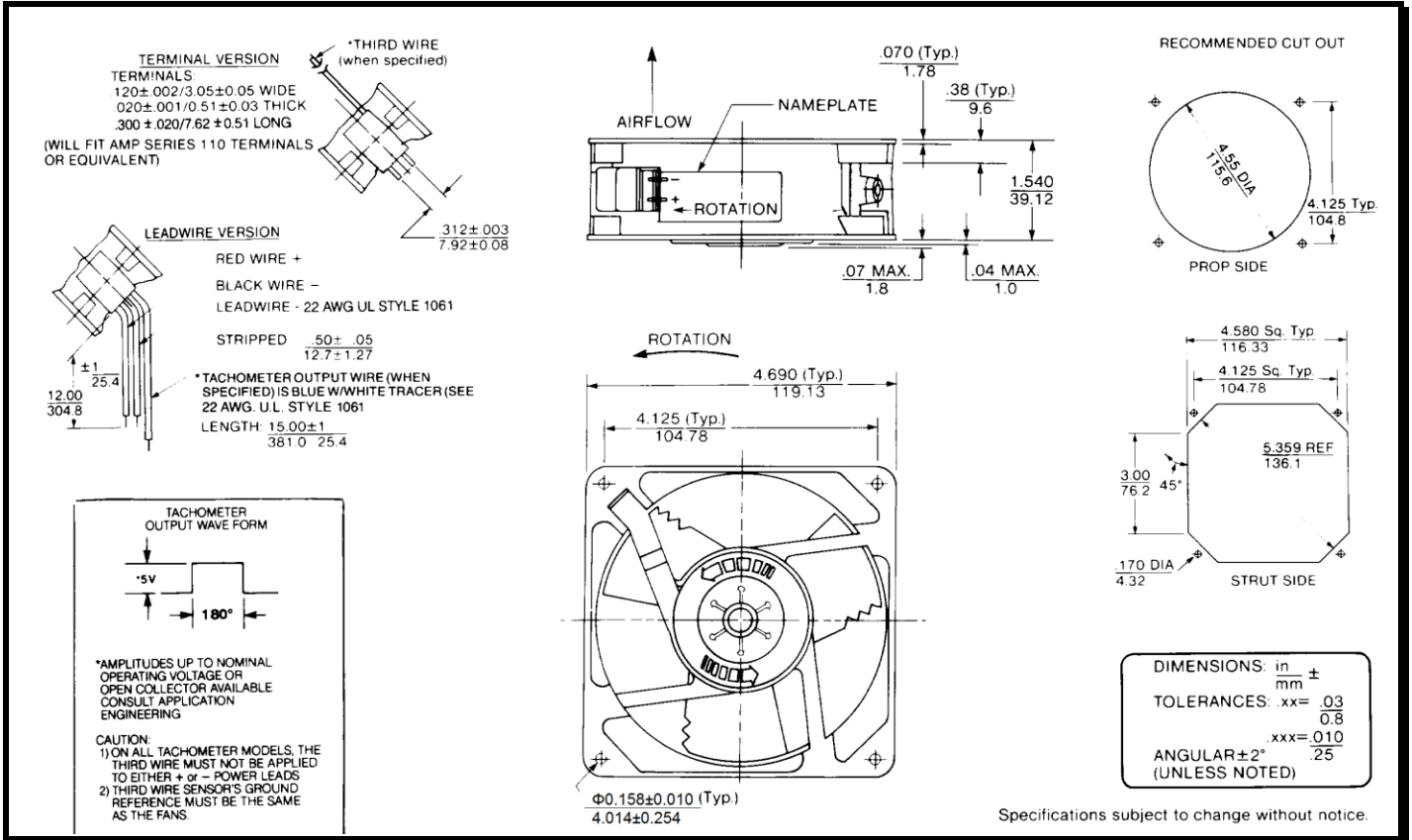
SPECIFICATIONS



Model Number: MD24B5
Part Number: 19028886A

Version: 01
Jan 19, 2018

Mechanical Drawing:



Motor:

Nominal Voltage = 24 vdc
 Operating Voltage Range = 12 - 28 vdc
 Running Current = 0.250 amps
 Locked Rotor Current = 0.750 amps
 Running Power = 6.0 watts
 Average Speed = 3100 rpm
 Bearings = Ball
 Air Flow = 106 CFM
 Acoustic = 50.0 dBA

Construction:

Venturi: Die-Cast Aluminum, Black
 Propeller: Plastic, Black, UL 94V-0

Life Expectancy:

This fan is designed for continuous duty life of 55,000 hours at 70°C.

Agency Approved:

UL, CUL, CE

Additional Features:

Brushless DC Motor
 Electronic Locked Rotor Protected
 Polarity Protected
 Automatic Restart Capability
 Operating Temperature: -10°C to 70°C
 Storage Temperature: -40°C to 85°C

Tachometer Output:

Isolated: No
 Output: 5 V TTL Compatible
 I_c: 5 mA Typical
 Pulse per Revolution: 1

Termination:

12" Lead wires, 22 AWG, UL 1061
 Red - Fan Power (+)
 Black - Fan Ground (-)
 Blue/White - Tachometer (Output)

PQ Curve:

